



Muslim Educational Trust

[www.metpdx.org](http://www.metpdx.org)

*Bringing  
Community  
Together  
Since 1993*

Education  
Outreach  
Recreation

# MET 2011 Annual Report

## Events & Programs



“IN ITS 19 YEARS OF EXISTENCE, MET HAS BECOME A BEACON OF LIGHT GUIDING BOTH MUSLIMS AND NON-MUSLIMS TOWARDS A BETTER UNDERSTANDING OF THE TRUE SPIRIT OF ISLAM AND HOW IT CAN CONTRIBUTE TO HARMONY IN OUR COMMUNITY. HAVING COME OF AGE, IT IS NOW TIME FOR THE ORGANIZATION TO HAVE ITS OWN HOME; A COMMUNITY CENTER THAT ENABLES IT TO CONTINUE AND EXPAND ITS OUTREACH.”



**Dr. Nohad A. Toulan**  
Distinguished Professor  
and Dean Emeritus,  
Department of Urban and  
Public Affairs, Portland  
State University

## Thank You for Another Successful Year

On behalf of the Muslim Educational Trust Board of Directors, Thank you and Jazakum Allahu Khairan! Thank you to everyone who believes in MET, supports MET, and invests his/her time and energy in contributing to the advancement of its goals. This year, it was my privilege to be of service as President of the Muslim Educational Trust and MET was blessed to have strong leadership among our board, staff team, and committees at every level. We were also fortunate to have our largest group of volunteers in recent memory. It is especially gratifying to see so many people, both Muslim and Non-Muslim from a wealth of different backgrounds, contribute to our success.

I have been reflecting on the tremendous progress that MET has made in the last 19 years. Fifteen years ago, back on September 8th, 1997, the Islamic School of MET (ISMET) was born. Our small community school opened for the very first time, and started to operate out of a small room in the Campus Ministry at Portland State University's Koinonia House with as few as 20 students. Due to demand in the community for Islamic education, space was sought for a bigger campus to accommodate more grade levels and serve more children in the community, to fulfil our duty of providing Islamic education to those who sought it. We permanently relocated to our Scholls Ferry Campus in 2000 and expanded our programs to include the 1st Islamic High School in the Portland metro area. Oregon Islamic Academy (OIA) was founded in 2007 and graduated its first class of seniors in June 2011. Today, ISMET and OIA lay the foundation for the life-long learning journey of over 165 children. This miracle did not happen by accident. It took hard work, faith, patience, a vision, the generosity of dedicated individuals who sincerely believe in Islamic education, and most importantly, the grace and infinite bounty of Allah, the Most Gracious.

The Prophet of God, peace be upon him, said, "The deeds of the children of Adam seize when they die except for three: perpetual charity, useful knowledge, or a righteous son/daughter who makes supplications for him/her." Alhamdulillah, the work that MET does is a continual charity for all those who take part in it. Every time a child learns an ayah from the Qur'an, every time a child says 'salaam alaikum', every time a child reflects on the greatness of Allah (SWT), every time a child excels in Science, Reading & Math, or passes down what they learned at MET to those around them, a good deed will be recorded to our credit, in shaa Allah (God willing).

Since 1993, MET impacted the lives of thousands of Muslims and Non-Muslims in the Greater Portland area and beyond through a wide variety of programs it offers in the areas of education, outreach, and interfaith. Most recently, MET was recognized by the Oregon Mediation Association and the National Council for International Visitors – World Affairs Council.

As we look to the future, I am enthusiastic about both the strong foundation that we have developed, as well as the milestones we have completed in the last year. In the last 12 months we have worked very hard to complete the construction documents of our long-awaited first of its kind Educational and Community Center and with everyone's support, our dream will soon become a reality inshaa' Allah (God Willing) with your continued support and commitment.

*I STRONGLY BELIEVE THAT SUCCESS COMES THROUGH PARTNERSHIP, WHILE CHALLENGES AND UNCERTAINTIES COME FROM COMPETITION. THANK YOU FOR YOUR PARTNERSHIP AND COLLABORATION! IT TAKES AN EFFECTIVE TEAM AND DEDICATED PEOPLE, TO MAKE THINGS HAPPEN AND TO ACCOMPLISH SUCCESS BY THE WILL OF ALLAH, THE MOST HIGH.*

*Wajdi*

**Wajdi Said**  
President and Co-Founder  
Muslim Educational Trust





## A Year of Excellence in Education

**1. Haroon Moghul**, Executive Director of Maydan Institute in New York, engages OIA High School Students in a workshop titled "Communicating and Representing." **2.** OIA High School Human Anatomy Class. **3.** ISMET students celebrate Earth Day. **4.** MET's 2nd Annual Energy Fair. **5.** 4 out of 9 Oregon Islamic Academy High School Projects recognized at Gresham-Barlow At-Large Science Expo. **6. Nabeeha Tahseen**, OIA 6th grade student, wins third place at the 44th Annual Valley Catholic Speech Tournament. **7.** June 2011 witnesses Oregon Islamic Academy's first High School Graduation. **Nima Mohamed** (top) was admitted to Lewis & Clark College and **Fatima Tarhuni** (bottom) was admitted to the Pacific Northwest College of Art. **8.** The Muslim Educational Trust Youth Ambassadors Club (YAC) announces the results of its first election of MET's Student Government. **9.** ISMET's Annual Preschool and Kindergarten Graduation. **10.** OIA High School Team competes at World Affairs Council WorldQuest Competition. **11.** National Association of Secondary School Principals (NASSP) grants Oregon Islamic Academy (OIA) the privilege of establishing and conducting an OIA Chapter of the National Junior Honor Society (grades 6-9) and an OIA Chapter of the National Honor Society (grades 10-12). **12.** Two ISMET/OIA Winners and Four Honorable Mentions in the 2nd Annual Human Rights Council of Washington County Poster Contest.



“ I WAS VERY IMPRESSED TO WATCH THE MUSLIM EDUCATIONAL TRUST WORK NOT ONLY WITHIN THE MUSLIM COMMUNITY BUT ALSO WITHIN THE INTERFAITH COMMUNITY, BRINGING THE JEWISH, CHRISTIAN AND MUSLIM PEOPLE TOGETHER. I AM FASCINATED BY HOW MET BRINGS THE COMMUNITY TOGETHER WHILE EDUCATING THEIR OWN CHILDREN WITH THE CULTURE, LANGUAGE, AND FAITH. ”

Mr. Sho Dozono  
Chief Executive  
Officer, Azumano  
Travel and 2008  
Portland Mayor  
Candidate





“ I AM AWARE OF THE NOBLE OBJECTIVES OF THE MUSLIM EDUCATIONAL TRUST AND HAVE FULL CONFIDENCE IN THE ISLAMIC KNOWLEDGE, RELIABILITY AND TRUSTWORTHINESS OF ITS MEMBERS. I REQUEST MUSLIMS IN THIS COUNTRY AND ABROAD TO EXTEND THEIR GENEROUS HANDS OF MORAL AND MATERIAL SUPPORT TO THE MUSLIM EDUCATIONAL TRUST. ”



Dr. Muzammil Siddiqi  
Chairman, Fiqh  
Council of North America

## A Year of Community Engagement



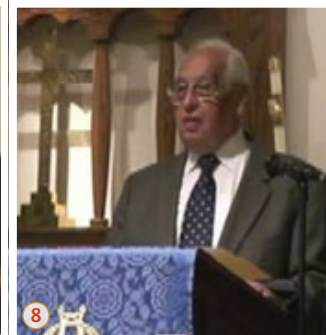
1. "Everything You've Ever Wanted to Know About the Supreme Court" Keynote Speech by **Dr. Robert Klonoff**, Dean and Professor of Law, Lewis & Clark College. 2. MET's 5th Annual Volunteer Appreciation Breakfast for over 200 committed, dedicated, and hard-working volunteers. 3. MET hosts World Affairs Council International Visitors from the Middle East. 4. "Citizenship Information" Workshop by the U.S. Citizenship and Immigration Services. 5. "Islamic Finance: Solution for Today's Economic Challenges" Workshop by **Dr. Muhammad Syafii Antonio**, Professor of Islamic Finance visiting from Bogor, Indonesia. 6. "Insights into Happiness and Love in your Marriage" Workshop with self-help tools, activities, resources, insights, and inspiration. 7. "Halal Investment and Financial Planning for American Muslims" Workshop by **Ms. Fatima Iqbal**, Investment Advisor, Azzad Asset Management. 8. Engaging Discussion at MET's Annual Book Fair with **Mr. Tamim Ansary**, Afghan American Author of "Destiny Disrupted." 9. City of Beaverton Community Bridge Building meeting with **Mayor Denny Doyle** and Community Leaders. 10. Staff Development with **Dr. David Streight**, Executive Director of the Center for Spiritual and Ethical Education. 11. "Quran: Its Revelation and Preservation" Keynote Speech by **Mr. Maqsood Chaudhary**, Senior Electrical Engineer, CH2M Hill; "Counter Culture - Collection of Immigrant Stories," by **Mr. Ronault Catalani (Polo)**, Attorney at Law, Immigrant and Refugee Affairs, City of Portland.





## A Year of Interfaith Dialogue

1. "Compassion in Islam" Lecture at First United Methodist Church. 2. Oregon Islamic Academy Middle School and High School students sing "Children of the World" at the Interfaith Council of Greater Portland's Annual Festival of Faith. 3. MET participates in Ecumenical Ministries of Oregon's Annual Fundraising Dinner where Dr. Khalid Khan receives an award. 4. "Peace in our Hearts, Peace in our World" Interfaith Panel Discussion at Lake Oswego United Church of Christ. 5. 6. 8. 9. MET offers 4 lectures about Islam and the Quran at St. James Lutheran Church in a series titled "Let the Light Shine". 5. "History of Islam and the Quran," Mr. Maqsood Chaudhary, Electrical Engineer at CH2M Hill. 6. "Themes of the Quran," Ms. Fatima Albar, Oregon Islamic Academy High School Quran Volunteer Teacher and PhD Candidate in Engineering and Technology Management at PSU. 8. "Islam and Muslims in the Media," Dr. Nohad Toulan, Dean Emeritus, College of Urban and Public Affairs at Portland State University. 9. "Economics in the Quran," Mr. Jawad Khan, MET Board Member and Oregon Islamic Academy Teacher. 7. MET receives the Mediators' Choice Award by Oregon Mediation Association for making positive contributions by building understanding, establishing trust, and enhancing interfaith dialogue. 10-11. MET Youth Ambassadors Club students present Islam to youth groups at Ainsworth United Church of Christ and the First United Methodist Church.



“THE MUSLIM EDUCATIONAL TRUST IS VERY SUCCESSFUL IN PROVIDING EXCELLENT ISLAMIC EDUCATION TO MEMBERS OF THE MUSLIM COMMUNITY IN OREGON. MET ALSO ORGANIZES OUTSTANDING OUTREACH EFFORTS WHICH ARE HIGHLY COMMENDABLE. I HAVE COMPLETE TRUST AND CONFIDENCE IN THE MUSLIM EDUCATIONAL TRUST AND ENCOURAGE EVERYONE TO SUPPORT THEIR NOBLE CAUSE.”

Dr. Jamal Badawi  
Professor Emeritus  
of Religious Studies,  
St. Mary's University,  
Halifax, Nova Scotia,  
Canada





“MET IS ONE OF THE ISLAMIC ORGANIZATIONS THAT TAKES A PROACTIVE ROLE IN THE COMMUNITY. THE LEADERSHIP AT MET, THE BOARD AND THE STAFF ARE EXTREMELY WELL ENGAGED IN THE COMMUNITY AND I THINK THIS IS OUTSTANDING. I AM ALWAYS BRAGGING ABOUT HOW WELL WE ARE DOING IN THE MUSLIM COMMUNITY IN SETTING AN EXAMPLE FOR OTHERS.”



Mr. Salahuddin Kadri  
President, ValueCad

## Historical 1st High School Graduation



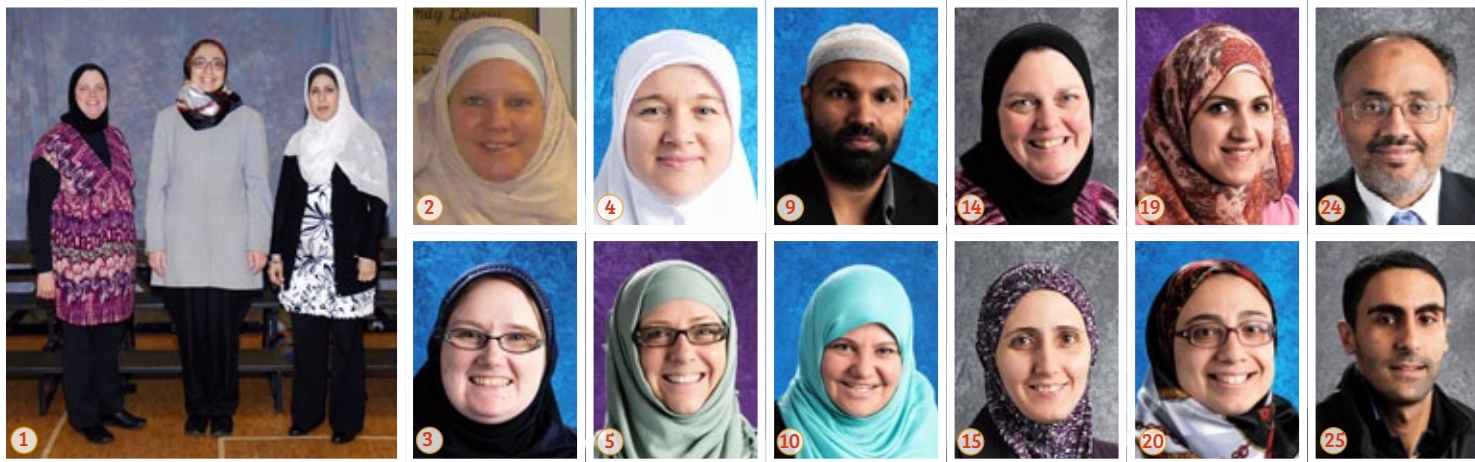
Saturday, June 11th 2011 witnessed Oregon Islamic Academy's First High School Graduation as well as OIA's Annual Middle School Graduation. The evening was filled with joy and happiness as students, teachers and guest speakers gave heart-warming speeches. Oregon Islamic Academy students also performed "Peace Train" and "Seasons of Love" as a gift to their fellow graduates. Parents felt proud seeing their children walk up the stage as **Dr. Kristine Parker** and **Ms. Judy Nielson** played the Prelude and Processional on the flute and keyboard. Guest speakers included **Mr. Jordan Elliott**, Head of Upper School, Oregon Episcopal School; **Dr. Khalid Khan**, Associate Dean, School of Engineering, University of Portland; **Ms. Gail Ramjan**, MET Co-Founder, Trustee, and former Islamic School of MET Principal; **Mr. Wajdi Said**, MET President and Co-Founder; **Ms. Nadira Najieb**, Former Islamic School of MET Principal; **Mr. Jawad Khan**, Oregon Islamic Academy Teacher and College Counselor; **Ms. Julie Ahmed**, Oregon Islamic Academy Social Studies/Speech & Journalism Teacher; **Ms. Sahar Bassyouni**, Oregon Islamic Academy Director; **Ms. Sanaa Saifan**, Oregon Islamic Academy Director of Student Affairs; Two articles about this historic event were published in The Oregonian and The Tigard Times respectively.





## A Year of Staff Dedication

1. Administrative Team: Kim Faks, Sahar Bassyouni, Sanaa Saifan 2. Aminah McDonald, 2011 Counselor 3. Ava Sujana, Kindergarten Homeroom 4. Birgul Acar, 2011 Middle School Science 5. Cory Takigawa, Middle/High School Math & Science 6. Eileen Wali, 2nd Grade Homeroom 7. Faiza Noor, Director of Special Programs 8. Fatima Albar, High School Quran 9. Jawad Khan, Middle School/High School Language Arts, Computer Lab, and College Advisory 10. Jennifer Al-Araby, 1st Grade Homeroom 11. Julie Ahmed, Middle School/High School Social Studies and Speech 12. Katie Escobar, 4th Grade Homeroom 13. Kauser Munir, Homework Club 14. Kim Faks, MET Office Manager 15. Maysoon Al-Hassan, 2011 Arabic and Fine Arts 16. Maysoun Ali, Preschool Homeroom 17. Mediha Youssef, 3rd Grade Homeroom 18. Nahid Sultana, 2011 High School Science 19. Nehal ElHadad, Middle School Arabic and Islamic Studies 20. Sahar Bassyouni, ISMET/OIA Director and High School Math 21. Sanaa Saifan, ISMET/OIA Director and Middle School Math 22. Vi Pham, 5th & 6th Grade Homeroom 23. Wafa Subhi, Middle School Math, Arabic, and Islamic Studies 24. Wajdi Said, President and High School Islamic Studies 25. Youssef Zirari, Elementary Arabic and Islamic Studies. Also... Lubna Abu-Hamdi, Preschool Homeroom. Rania Ayoub, Director of Public Relations.



“ WHEN I FIRST CAME TO OREGON MANY YEARS AGO, THERE WEREN'T ANY ISLAMIC SCHOOLS. OVER THE YEARS, MET HAS DONE AN OUTSTANDING JOB IN PROVIDING COMPLETE ISLAMIC EDUCATION. MET IS ONE OF THE TOP SCHOOLS, NOT JUST IN THE STATE OF OREGON, BUT ALSO IN THE ENTIRE COUNTRY. IT IS PREPARING THE STUDENTS TO BECOME OUR FUTURE LEADERS. ”

Ms. Laila Cully  
Business Finance Officer,  
Oregon Economic and  
Community Development



“THE MUSLIM EDUCATIONAL TRUST IS ORGANIZED, EFFECTIVE, AND IT HAS THE RIGHT MESSAGE. IT IS ALSO DOING THE RIGHT THING BY INVOLVING ITS SCHOOL WITH LOCAL AND STATE-WIDE ACTIVITIES THAT ARE INTER-SCHOOL AND THAT IS VERY IMPORTANT BECAUSE THE OTHER KIDS WILL REALIZE THAT OTHER THAN DRESS, MUSLIM STUDENTS DON'T LOOK VERY DIFFERENT AND THEY DON'T ACT VERY DIFFERENTLY FROM THEM.”



**Dr. Tom Bartlett**  
Former President,  
American University in  
Cairo, and Chancellor,  
University of Alabama  
Systems

## A Year of Open Conversations



The Muslim Educational Trust Kadri Family Library launched its first of five lectures titled “Open Conversations: Reflections on Islam in America” in April 2011. The overarching theme was to get beyond “the other” in our society, those we do not know personally but use stereotypes for. The goal of the lecture series was to expand the intellectual dialogue among all citizens of the Portland region to discuss many topics of intellectual and cultural life that are important regardless of religious affiliation and belief. **1.** “How Media Shapes Our Values and Faith: Then and Now” by **Ms. Edina Lekovic**, Director of Policy and Programming at the Muslim Public Affairs Forum. Panelists included **Mr. Tom Krattenmaker**, Vice President of Public Relations, Lewis & Clark College; **Mr. Jim Hanna**, Member of the Arab American Community of Portland and SW Washington; **Ms. Nancy Haught**, Religion Writer, The Oregonian. **2.** “The Theology of the Other in Islam: An American Muslim Perspective” by **Dr. Yahia Abdul-Rahman**, Founder of Lariba Bank. **3.** Screening Award-Winning Movie “Out of Cordoba: Averroes and Maimonides in Their Time and Ours” followed by an interfaith panel discussion with **Mr. Jacob Bender**, Movie Director; **Rabbi Daniel Isaak**, Congregation Neveh Shalom; **Rev. Dr. Patricia Ross**, Retired Senior Minister, First Congregational United Church of Christ; **Mr. Jawad Khan**, Oregon Islamic Academy Humanities and Language Arts Teacher. Moderator: **Dr. Jan Abu Shakrah**, Gerontology Program Director & Dept Chair, Portland Community College and Co-Chair, Institute for Christian-Muslim Understanding. This program was made possible in part by a grant from Oregon Humanities (OH). Other sponsors included Portland State University Middle East Studies Center & Sociology of Islam and Muslim Societies, Somali Youth of Oregon, Bilal Masjid Association, Islamic Society of Southwest Washington, and Muslim Community Center of Portland.

## A Year of Oregon's Muslim Youth

Oregon's Muslim Youth (OMY <sup>أمة</sup>) is a youth enrichment, engagement, and mentoring program. With the vision of nurturing today's youth for a brighter tomorrow, the mission of OMY is to change lives and build bright futures for Oregon's Muslim children and youth by developing generations of proud and committed Muslims who lead their community to the forefront of bridge-building dialogue, faith-based community service, and stewardship of Earth and humanity. OMY seeks to meet the educational, social, and spiritual needs of our youth while equipping them with the tools, knowledge, and work ethic they need to succeed and leave their mark in today's world. The following are some of OMY's programs:

- \* Geo Bee
- \* Art Club
- \* Career Day
- \* Chess Club
- \* Energy Fair
- \* Poetry Night
- \* Tae-Kwon-Do
- \* Math Carnival
- \* Mini Hajj
- \* Lego Robotics
- \* Quran Contest
- \* Basketball Club
- \* Jump Rope Club
- \* College Advisory
- \* Weekend School
- \* Buddy Mentorship
- \* Alumni Association
- \* Science Fair & Expo
- \* Youth Essay Contest
- \* Speech Tournament
- \* Youth Ambassadors Club
- \* Sports & Nutrition Club
- \* Media & Multicultural Club
- \* Arabic & Islamic Studies Fair
- \* English & Arabic Spelling Bee
- \* Toastmasters Youth Leadership
- \* Academic Exchange with Oregon Episcopal School and other schools





## A Year of Youth Leadership

1. MET Youth Ambassadors Club participates in the 2011 Portland Hunger Walk to raise awareness about Hunger in Portland. 2. Oregon Islamic Academy Seniors spend a day at Lewis & Clark College attending classes and touring campus. 3. MET Youth Ambassadors Club students participate in a panel discussion about Compassion at the First United Methodist Church during their Lent season lectures. 4. MET Youth Ambassadors Club participates in the Oregon SOLV Beach Cleanup at Cannon Beach. 5-7. Oregon Islamic Academy Juniors and Seniors join the Flight for Friendship to Japan to help with the Tsunami relief efforts. **Amirah Fattom** speaks about compassion in Islam at a Buddhist Temple in Sendai and **Mariam Said** speaks at the farewell dinner about the reason she and her colleagues joined this special trip. 8. MET Youth Ambassadors Club establishes a Reading Buddy Program where each student partners with a Kindergarten student once a week and helps him/her with reading. 9. MET Youth Ambassadors volunteer at the Oregon Food Bank. 10. MET Youth Ambassadors participate in the Day of Homelessness Awareness and give a speech about Youth Homelessness and Islam's views on helping the needy. 11-12. Oregon Islamic Academy High School students attend the Islamic Society of North America (ISNA) Conference organized by Muslim Youth of North America (MYNA) and meet many scholars including **Dr. Tariq Ramadan**, Professor of Islamic Studies, Oxford University, England.



“ THIS COMMUNITY CENTER GIVES A PHYSICAL PRESENCE TO THE WORK THAT IS ALREADY HAPPENING AND PHILOSOPHY OF INCLUSIVITY THAT THE MUSLIM EDUCATIONAL TRUST HAS ALWAYS ESPOUSED AND OF COURSE AT THE WORLD AFFAIRS COUNCIL, WE ARE VERY EXCITED ABOUT THE OPPORTUNITY TO COLLABORATE ON EVEN MORE EVENTS WITH THE MUSLIM EDUCATIONAL TRUST. ”

Ms. Maria Wulff  
President, World  
Affairs Council of  
Oregon



“ I WAS VERY IMPRESSED BY THE WORK THAT IS DONE BY THE MUSLIM EDUCATIONAL TRUST. I ENCOURAGE EVERYONE TO SUPPORT THIS PROJECT BECAUSE WE NEED TO INSTITUTIONALIZE OUR PRESENCE. WE NEED TO HAVE SUCH CENTERS AND HAVE A PHILOSOPHY COMING OUT OF THESE CENTERS. IT WILL BE AN ADDED VALUE IN THE US AT THE LOCAL LEVEL AS WELL AS NATIONAL AND INTERNATIONAL LEVEL. ”



Dr. Tariq Ramadan  
Professor of Islamic  
Studies, Oxford University,  
London, England

## A Year of Hard Work

2011 was a year of hard work for the Muslim Educational Trust's Technical Committee members, who tirelessly worked towards the completion of 100% of the construction documents for our long-awaited, MET Community and Educational Center. Inshaa' Allah (God Willing), 2012 will witness MET's most important production ever: the transformation of the Muslim Educational Trust into the first of its kind, full-fledged, community and educational center that will be a beacon of light to our youth and our beloved community at large. The Muslim Educational Trust Community Center will be a place where people may come together to grow in mutual understanding and respect, helping to make the Portland area a better place for all citizens. The Center will welcome and encourage members of all faiths and ethnic backgrounds to partake in a wide variety of on-site activities and events, including athletics, lectures, concerts, art openings, research, study opportunities, shopping, interfaith dialogues, and social events such as MET's monthly potluck/forum, weddings, and other celebrations. The Center will include a Gymnasium/Multipurpose Hall/Musalla, an Indoor Swimming Pool, an Islamic Museum, Art Gallery, and Art Studio, a Resource Library, a Computer/Media Lab and Science Lab, a Commercial Kitchen, a Gift Store/Book Store, a Fitness Center/Exercise Room, 15 Classrooms, and a Children's Playground. We divided the square footage of the community center into shares that donors can sponsor and dedicate to their loved ones. The benefit of buying shares is a symbolic ownership of the center as well as a continued charity (Endowment) that multiplies and keeps on reaping reward in this life and in the next.



### Opportunities for Continued Charity

#### فرص للإستثمار فلي صدقة جارية

لا نبتل على والدك وزوجك وإخوانك وكل من تحب بهذا الأجر. صدقت جاريث بإذن الله، وفقت خيرتي مستم ونكر جاري من الحسنات لا ينقطع بانقطاع الحياة... وفقت بر الوالدين، وفقت النعمت، وفقت الوفاء، وفقت النور... عمل خيرتي في الدنيا يبنى لك ولوالدك ولكل من تحب أرباحاً من الحسنات في الآخرة.

Your gift of endowment shares is one that multiplies and keeps on giving and reaping reward in this life and in the next. Choose any of 4 types of shares to establish a living memory of yourself and your loved ones.

Seize the opportunity and claim your charitable shares today!  
سارعوا لشراء الأسهم الوقفية الخيرية اليوم

**HONORING SHARE**  
سهم البر الوقفي

Honor your mother  
or father

**FAITHFULNESS SHARE**  
سهم الوفاء الوقفي

Honor your friends  
or loved ones

33,000  
Square Feet

=  
33,000  
Shares

قيمة السهم \$250  
\$250/Share  
(To build and furnish  
1 square foot)

**THANKFULNESS SHARE**  
سهم النعمة الوقفي

Honor yourself, your  
spouse or children

**ENLIGHTENMENT SHARE**  
سهم النور الوقفي

Honor our youth  
and their education

Buy your shares today at [www.metpdx.org](http://www.metpdx.org)

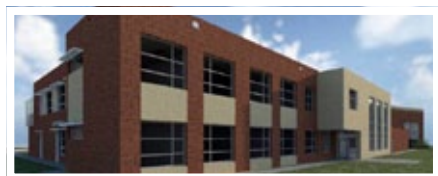
قال رسول الله صلى الله عليه وسلم: "إذا مات ابن آدم انقطع عمله إلا من ثلاث: صدقة جارية أو علم ينتفع به أو ولد صالح يدعو له". رواه مسلم

"When a person dies, all his/her good deeds cease except for three: A continuous act of charity, beneficial knowledge, or a righteous child who prays for him/her." (Muslim)



## A Year of Designing and Planning

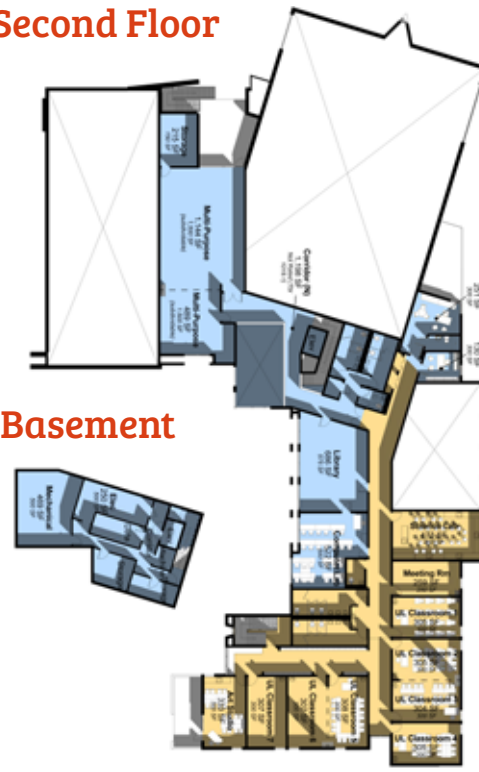
The design will incorporate the history, traditions, and cultures of American Muslims. With its use of geometry, massing, light, materials and imagery of the middle eastern region to provide clues and precedents for the design, the design has roots in a rich tradition. It is the application of these ideas with an abstract or modern interpretation that allows the building to be a strong cultural symbol, and be rooted in the modern day. The facade responds to the life force of the central tree, creating a subtle spiral that leads the community to the Center's entry. The facade of the indoor swimming pool will be a geometric veil with a translucent panel to allow day light in, while creating privacy for community members. The backlighting at night will reveal the arches and become a lantern to the community. The minaret and dome will be local symbols of Islamic heritage and will provide a locus for members of our community to celebrate their heritage while fully engaging in their broader communities. The modest style of the Educational Center, with elements of the Islamic Architecture, will create a soothing backdrop to the courtyard oak and the energetic community areas of the building. Dynamic forms against the street interact with the neighborhood. The variety of materials, colors, and transparency creates changing qualities that stimulate the site over the course of the day.



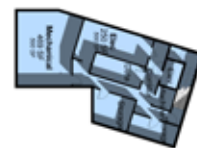
First Floor



Second Floor



Basement



**I'M BLOWN AWAY BY THIS PROJECT. THIS CENTER IS ONE OF THE BEST IDEAS I HAVE SEEN ACROSS THE COUNTRY. I AM IMPRESSED WITH THE IDEA OF HAVING A MASTID AND BUILDING A GYMNASIUM, CULTURAL CENTER, AND A MUSEUM. MET HAS MY 100% ENDORSEMENT. I CAN'T WAIT TO SPEND MY OWN MONEY TO COME HERE AND WITNESS THIS MARVELOUS FACILITY ONCE IT'S BUILT INSHAA' ALLAH.**

Imam Siraj Wahhaj  
Imam, Majid At-Taqla,  
Brooklyn, New York

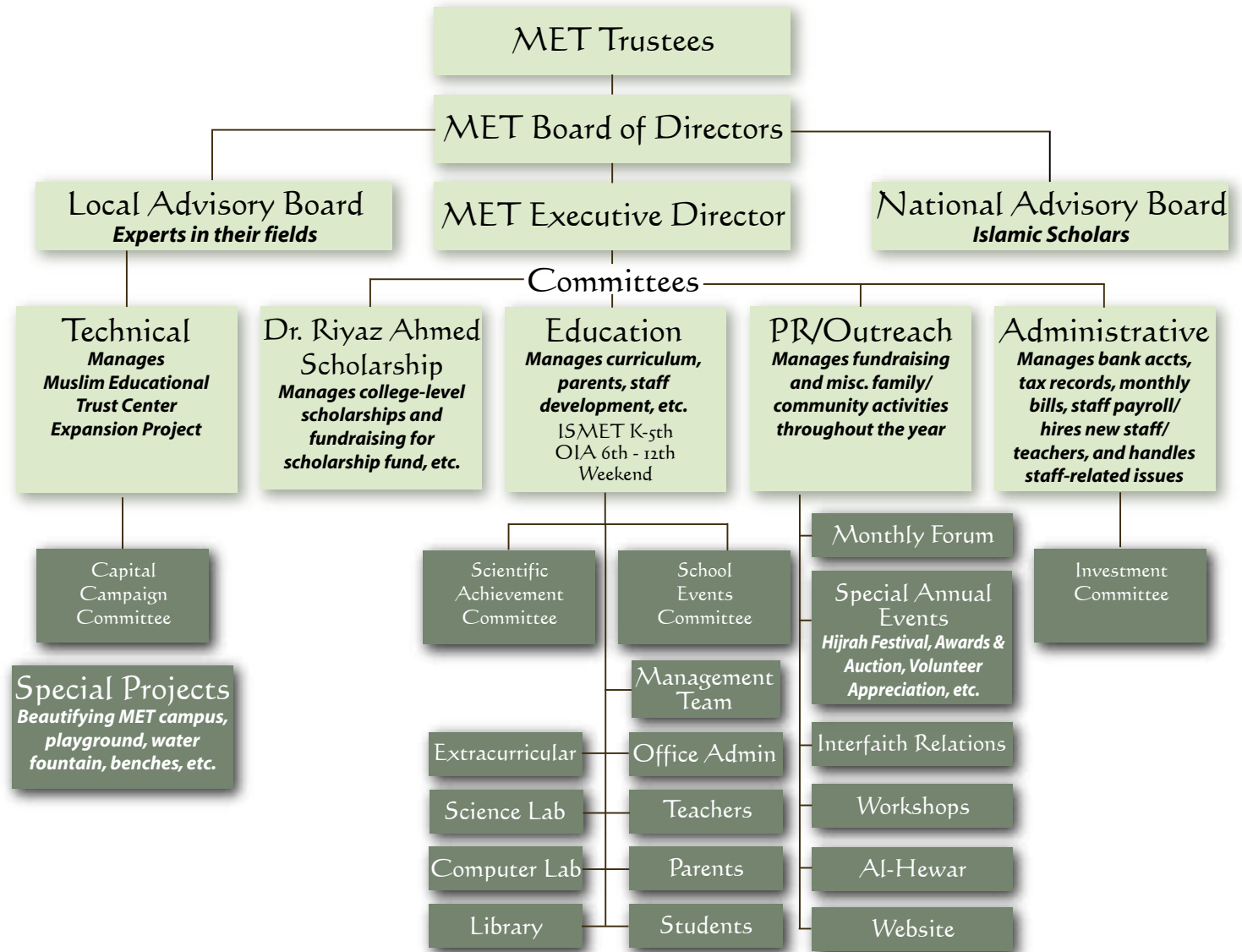


## Our Structure

“ HAVING THE MUSLIM EDUCATIONAL TRUST IN TIGARD IS REALLY HELPING WITH THE MUTUAL UNDERSTANDING AND GROWTH FOR THE ENTIRE COMMUNITY. I REALLY FEEL LIKE WE HAVE A WONDERFUL PARTNERSHIP WITH THE MUSLIM EDUCATIONAL TRUST AND THE OPPORTUNITY TO HAVE THIS TYPE OF FACILITY IN OUR COMMUNITY MAKES OUR COMMUNITY SO MUCH RICHER AND MORE VIBRANT. ”



Mr. Craig Prosser  
Former Manager,  
City of Tigard





## A Year of Mission Accomplishment



The Muslim Educational Trust (MET) was founded in 1993 with a mission to enrich the public's understanding of Islam and dispel common myths and stereotypes, while serving the Muslim community's educational, social, and spiritual needs in order to develop generations of proud and committed Muslims who will lead our community to the forefront of bridge-building dialogue, faith-based community service, and stewardship of Earth and humanity. We accomplish this mission through:

- ✳ Presenting public lectures about Islam to educate both Muslims and Non-Muslims.
- ✳ Establishing interfaith dialogue to open channels of communication with people of different faiths.
- ✳ Operating an informal speakers bureau.
- ✳ Being an active advocate among local news organizations for non-biased news coverage.
- ✳ Publishing a quarterly newsletter, Al-Hewar.
- ✳ Coordinating communication between Muslim organizations, Islamic Centers, and the community.
- ✳ Operating a full-time licensed and accredited Islamic school, (Pre-K - 5th: Islamic School of MET - ISMET and 6th - 12th: Oregon Islamic Academy - OIA) as well as a Weekend Islamic School.
- ✳ MET is the co-founding member of the following Interfaith Organizations: Institute for Christian-Muslim Understanding (ICMU), Arab-Jewish-Muslim Dialogue, Interfaith Council of Greater Portland (ICGP), and Between-Women Interfaith Group.

## A Year of Partnerships

Many thanks to the Muslim Educational Trust's Faith-Based and Community Partners:

- ✳ Ainsworth United Church of Christ
- ✳ American Civil Liberties Union Foundation of Oregon (ACLU)
- ✳ Arab and Muslim Portland Police Advisory Board (AMPAC)
- ✳ Beth Israel: Rabbi Michael Cahana
- ✳ Between-Women Interfaith Group
- ✳ Center for Spiritual and Ethical Education (CSEE)
- ✳ The Collins Foundation
- ✳ Ecumenical Ministries of Oregon (EMO)
- ✳ First United Methodist Church
- ✳ Good Neighbor Center Homeless Shelter of Tigard
- ✳ Havurah Shalom Synagogue: Rabbi Joey Wolfe
- ✳ Institute for Christian-Muslim Understanding (ICMU)
- ✳ Intel Northwest Science Expo and INTEL Foundation
- ✳ Interfaith Council of Greater Portland (ICGP)
- ✳ Islamic Social Services of Oregon State (ISOS)
- ✳ Japanese-American Citizens League (JACL)
- ✳ JOIN Oregon
- ✳ Lewis & Clark College
- ✳ Linfield College
- ✳ Mercy Corps
- ✳ Muslim Students Association, Portland State University
- ✳ Neighborhood House of SW Portland
- ✳ Neveh Shalom Synagogue: Rabbi Daniel Isaac
- ✳ Northwest Religious Liberty Association
- ✳ Office of International Affairs, Middle East Studies Center, PSU
- ✳ Oregon Department of Justice
- ✳ Oregon Episcopal School (OES)
- ✳ Oregon Federation of Independent Schools (OFIS)
- ✳ Oregon Humanities
- ✳ Oregon Nikkei Legacy Center, a Japanese American History Museum
- ✳ Our Lady of the Lake Catholic Church
- ✳ P'Nai Or Jewish Renewal Synagogue
- ✳ Portland General Electric Diversity Summit 2004-10
- ✳ Spiritus Abbey and Institute for Progressive Spirituality
- ✳ St. James Lutheran Church
- ✳ St. Mary's Academy of Portland, Sister Mollie Reavis, SNJM
- ✳ Westminster Presbyterian Church
- ✳ World Affairs Council of Oregon

“THIS COMMUNITY CENTER WILL BE SPECIAL BECAUSE IT WILL BE A PLACE WHERE MANY CITIZENS WHO PERHAPS DON'T KNOW MUCH ABOUT THE MUSLIM CULTURE AND FAITH CAN COME TOGETHER AND LEARN WITH CITIZENS OF THE GREATER PORTLAND AREA. I'M TREMENDOUSLY EXCITED ABOUT THE VISION AND WANT TO SEE IT COME TO PASS AS QUICKLY AS POSSIBLE. I WISH IT EXISTED 10 YEARS AGO.”

Mr. Neal Keny-Guyer  
Chief Executive Officer,  
Mercy Corps



“WHAT I LIKE ABOUT THE PROPOSED COMMUNITY CENTER IS THAT IT SEEMS SO FLEXIBLE. WHAT HAPPENS IN THE BUILDING IS WHAT'S IMPORTANT. YOU WILL HAVE LOTS OF DIFFERENT KINDS OF SPACE FOR PEOPLE, THAT CREATE A COMMUNITY THAT GROWS AND CHANGES OVER TIME AND THAT FEELS LIKE HOME TO A LOT OF PEOPLE. WORKING TOGETHER TO GET IT DONE IS PART OF WHAT IS GOING TO MAKE IT A BEAUTIFUL SPACE ONCE IT IS BUILT.”



Ms. Amanda Fritz  
Commissioner,  
City of Portland

## Our Committees

### Board of Trustees:

Ms. Laila Cully, Member  
Mr. Lawrence de Block, Member  
Imam Muhammad Najieb, Former President  
Dr. Waleed Qaisi, Member  
Mr. Ayoub Ramjan, Co-Founder  
Ms. Gail Ramjan, Co-Founder  
Mr. Akram Saadi, Member  
Mr. Wajdi Said, Co-Founder  
Mr. Rebai Tamerhoulet, Former President

### Board of Directors:

Ms. Rania Ayoub, Member  
Ms. Sahar Bassyouni, Secretary/Treasurer  
Mr. Jawad Khan, Member  
Mr. Mohammed Jamal Khan, Member  
Mr. Wajdi Said, President  
Mr. Bambang Suparjo, Member  
Mr. Jahed Sukhun, Vice President  
Mr. Ibrahim Turki, Member  
Mr. Bashar Wali, Member

### Outreach Committee:

Ms. Fatima Albar, Co-Chair  
Mr. Issam Alghasham, Member  
Ms. Rania Ayoub, Co-Chair  
Ms. Katie Escobar, Member  
Ms. Karen Finkbeiner, Member  
Mr. Wesam Khalil, Member  
Mr. Jawad Khan, Member  
Mr. Mohammed Jamal Khan, Member  
Mr. Ron MacKenzie, Member  
Ms. Faiza Noor, Member  
Mr. Jahed Sukhun, Member

### Technical Committee:

Mr. Iftikhar Ahmed, Treeline Designz  
Ms. Rania Ayoub, MET Director of PR  
Mr. Maqsood Chaudhary, CH2M Hill  
Mr. Lawrence de Block, de Block Landscaping  
Mr. Fouad Elghrabli, Landscape Architect  
Mr. Mazen Jallad, NW Pyramids  
Mr. Salahuddin Kadri, ValueCAD  
Mr. Brad Kilby, City of Sherwood

Mr. Ejaz Khan, Clarke County  
Mr. Nauman Quraishi, City of Portland  
Mr. Wajdi Said, MET President and Co-Founder  
Mr. Jahed Sukhun, Portland State University  
Mr. Rebai Tamerhoulet, STC Engineers  
Mr. Ibrahim Turki, Washington County  
Mr. Hamoudi Zouyed, NBZ Engineers

### Scientific Achievement Committee:

Ms. Manar Alattar, B.Sc. Microbiology  
Ms. Fatima Albar, Ph.D. Candidate ETM Program  
Ms. Nura Almagbari, Science Teacher  
Ms. Umber Almakky, Parent  
Ms. Sahar Bassyouni, ISMET/OIA Director  
Mr. Steve Dyck, Ph.D., Retired Intel Researcher  
Dr. Faiza Kareem, MD  
Mr. Wesam Khalil, INTEL  
Mr. Jawad Khan, OIA Teacher and College Counselor  
Dr. Bill Lamb, Head of Science Dept, Oregon Episcopal School  
Dr. Waleed Qaisi, MD/MET Trustee  
Ms. Sanaa Saifan, ISMET/OIA Director

### High School Committee:

Dr. Jan Abu-Shakrah, Portland Community College  
Ms. Julie Ahmed, Veteran MET Teacher  
Mr. Jim Hanna, CFO, Hanna Development Inc.  
Mr. Jawad Khan, Veteran MET Teacher  
Sister Mollie Reavis, SNJM, Former Principal, St. Mary's  
Mr. Wajdi Said, MET President and Co-Founder

### Capital Campaign Committee:

Ms. Rania Ayoub, MET Director of PR  
Mr. Anwar Bashar, C.P.A., Bashar & Johnson  
Ms. Laila Cully, Business, Innovation and Trade Division  
Mr. Lawrence de Block, President of de Block Landscaping  
Mr. Salahuddin Kadri, President ValueCAD  
Dr. Don Riggs, Retired VP of Development, PSU  
Mr. Wajdi Said, MET President and Co-Founder  
Mr. Bashar Wali, President, Provenance Hotels

### Investment Committee:

Ms. Rania Ayoub, MET Director of PR  
Ms. Laila Cully, Business, Innovation and Trade Division  
Ms. Trista Hendren, Senior Mortgage Broker

Mr. Salahuddin Kadri, President, ValueCAD  
Mr. Wajdi Said, MET President and Co-Founder  
Dr. Nohad Toulou, Dean Emeritus, PSU  
Mr. Bashar Wali, President, Provenance Hotels

### Local Advisory Board:

Dr. Jan Abu-Shakrah, PCC-Sylvania  
Mr. Frank Afranji, PGE  
Dr. Masud Ahmad, MD  
Ms. Salma Ahmad, Crescent Travel  
Mr. Shahriar Ahmad, Intel  
Mr. Gulzar Ahmed, Crescent Systems  
Mr. Salman Almakky, Transcore Inc.  
Dr. Ezra Azhar, MD  
Mr. Anwar Bashar, CPA  
Mr. Maqsood Chaudhary, CH2M Hill  
Ms. Marta Colburn, Colburn Consulting  
Ms. Marion Dawan, Educator  
Ms. Aseel Nasir Dyck, Librarian  
Ms. Anusha Elias, ClearEdge Power  
Dr. Abeer Etefa, UN World Food Program  
Dr. Youssef El-Mansy, Retired Intel Corp. VP  
Mr. Adnan Haddad, Civil Engineer  
Ms. Zaha Hassan, Attorney  
Mr. Jim Hanna, Educator  
Ms. Nikki Hatton, Attorney  
Mr. Mazen Jallad, General Contractor  
Mr. Salahuddin Kadri, ValueCAD  
Mr. Arif Kareem, President, Fluke Networks  
Mr. Fares Kekhia, OTAK  
Mr. Ejaz Khan, Clark County, Vancouver  
Dr. Khalid H. Khan, U of P  
Ms. Susan Marmaduke, Attorney  
Mr. Abdul-Wahid Najim, Educator  
Mr. Thomas Nelson, Attorney  
Mr. Nawzad Othman, OTAK  
Mr. Nauman Quraishi, City of Portland  
Sr. Mollie Reavis, SNJM, Former Principal, St. Mary's  
Dr. Don Riggs, Consultant  
Dr. Mohammad Siala, Salman Alfarisi Center  
Imam Mikal Shabazz, OICO  
Dr. David Streight, CSEE  
Dr. Nohad Toulou, PSU  
Mr. Hamoudi Zouyed, NBZ Consulting  
Ms. Nadia Zouyed, NBZ Consulting



## Our Budget

### Outreach

- Hosting Speakers/International Visitors
- Quran and Islamic Resources Distribution
- MET Contributions to non-profit organizations through special fundraising drives
- Monthly Forums
- Public Lectures
- Workshops
- Monthly Online MET News
- Al-Hewar Newsletter
- Interfaith Events
- Supporting Ramadan Food Drives\*
- Dr. Riyaz Ahmed Scholarship Fund\*
- Annual Quran Contest
- Annual Youth Essay Contest
- Eid Parties
- Annual Open House
- Supporting Needy Muslim Families (food, utilities and medical bills)\*

**\$45,263**

### Education

- Teacher Salaries
- Payroll Taxes
- Employee Benefits
- Professional Subscriptions
- Liability Insurance
- Disability Insurance
- Printing and Copying
- Professional Fees
- Modular Building Rent
- Telecommunications
- Staff Development
- Office Supplies
- School Supplies\*
- Student Activities
- Financial Aid\*
- Student Awards & Recognition

**\$800,209**

### Operation

- Building Repairs and Maintenance
- Building Insurance
- Accounting Services
- Legal Fees
- Consulting Services
- Alarm Surveillance
- Landscaping
- Gas and Electricity
- Sewage and Water
- Janitorial Services
- Janitorial Supplies
- Waste Management
- Bank Service Charges
- Postage and Delivery

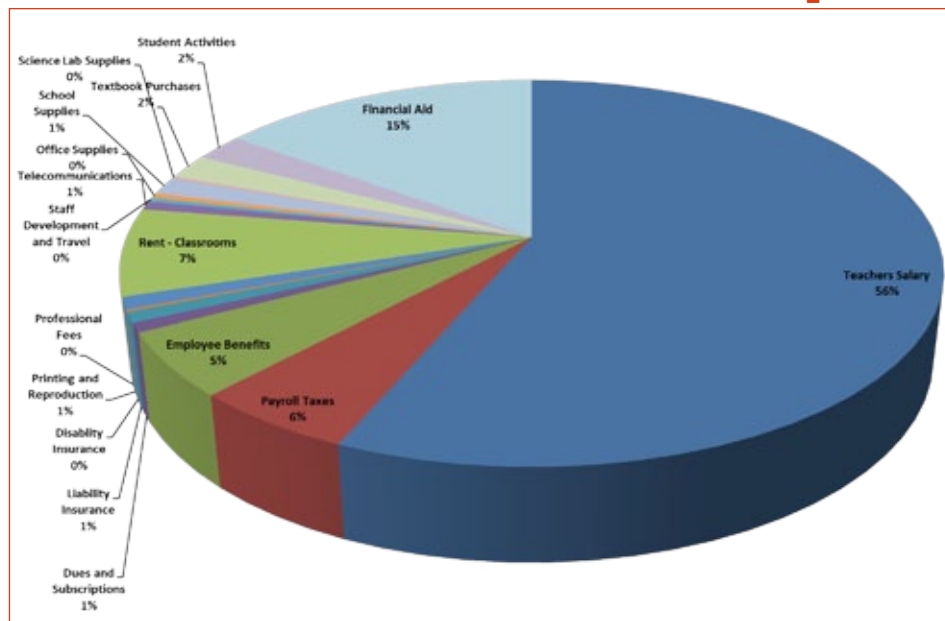
**\$118,516**

### Revenue

Tuition

**\$642,288**

## Breakdown of Annual Educational Expenses



\* Expenses covered by the Annual Zakah Fund are dedicated to supporting needy Muslim families with life necessities including food, rent, school supplies, and medical bills.

## 2011 Fundraising Goal: \$321,700

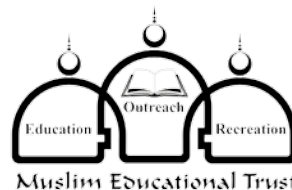
Thanks to Allah (SWT) and to generous community members, MET was able to raise donations throughout 2011 to achieve this goal and cover the deficit.



Oregon Islamic Academy Senior Class of 2011 with Prospective Class of 2023 God Willing

IN 1993, MET WAS FOUNDED WITH THE DREAM TO HELP CREATE AN OPEN, EMPOWERING, AND COLLABORATIVE ATMOSPHERE WITHIN THE MUSLIM COMMUNITY IN THE GREATER PORTLAND AREA. OVER THE LAST NINETEEN YEARS, MET HAS MADE SIGNIFICANT STRIDES IN THE DEVELOPMENT OF PORTLAND'S ISLAMIC-BASED EDUCATION. MET'S FOCUS ON EDUCATION THROUGH POSITIVE INTERACTION WITH MUSLIMS AND NON-MUSLIMS AND HONEST COMMUNICATION WITH THE MEDIA AND PUBLIC OFFICIALS HAS POSITIVELY IMPACTED NOT ONLY THE PEOPLE OF PORTLAND, BUT WELL BEYOND OUR LOCAL AREA. THE GREATEST IMPACT HAS BEEN ON A CORE GROUP OF STUDENTS WHO HAVE SPENT THEIR FORMATIVE YEARS AT THE ISLAMIC SCHOOL OF MET AND OREGON ISLAMIC ACADEMY. THESE STUDENTS HAVE GROWN TO BE SUCCESSFUL ACADEMICALLY, BUT MORE IMPORTANTLY, BECOME THE EMBODIMENT OF WHAT IT MEANS TO BE A CONFIDENT, ACTIVE, BELIEVING, AND PRACTICING YOUNG AMERICAN MUSLIM. INSHALLAH, IT WILL BE THESE VERY SAME STUDENTS WHO GROW INTO LEADERSHIP ROLES IN THE COMING YEARS AND HELP LEAD OUR COMMUNITY TO BE IN THE VANGUARD OF THOSE WHO ENGAGE IN BRIDGE-BUILDING DIALOGUE, FAITH-BASED COMMUNITY SERVICE, AND STEWARDSHIP OF EARTH AND HUMANITY.

**Vision Statement by Co-Founders of the Muslim Educational Trust: Mr. Ayoob Ramjan, Ms. Gail Ramjan, Mr. Wajdi Said**



### Contact Information

Muslim Educational Trust  
P.O. Box 283, Portland, OR 97207  
Phone: (503) 579-6621 Fax: (503) 590-0201  
Website: [www.metpdx.org](http://www.metpdx.org)  
Community Center Website: [www.metpdx.org/CC/index.html](http://www.metpdx.org/CC/index.html)  
E-mail: [metpdx@metpdx.org](mailto:metpdx@metpdx.org)

### Follow Us

on Facebook - Met Oregon